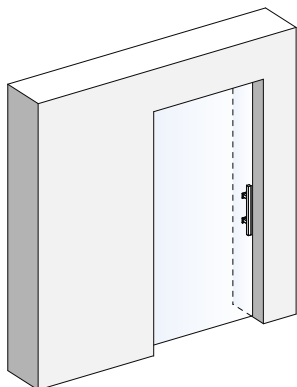
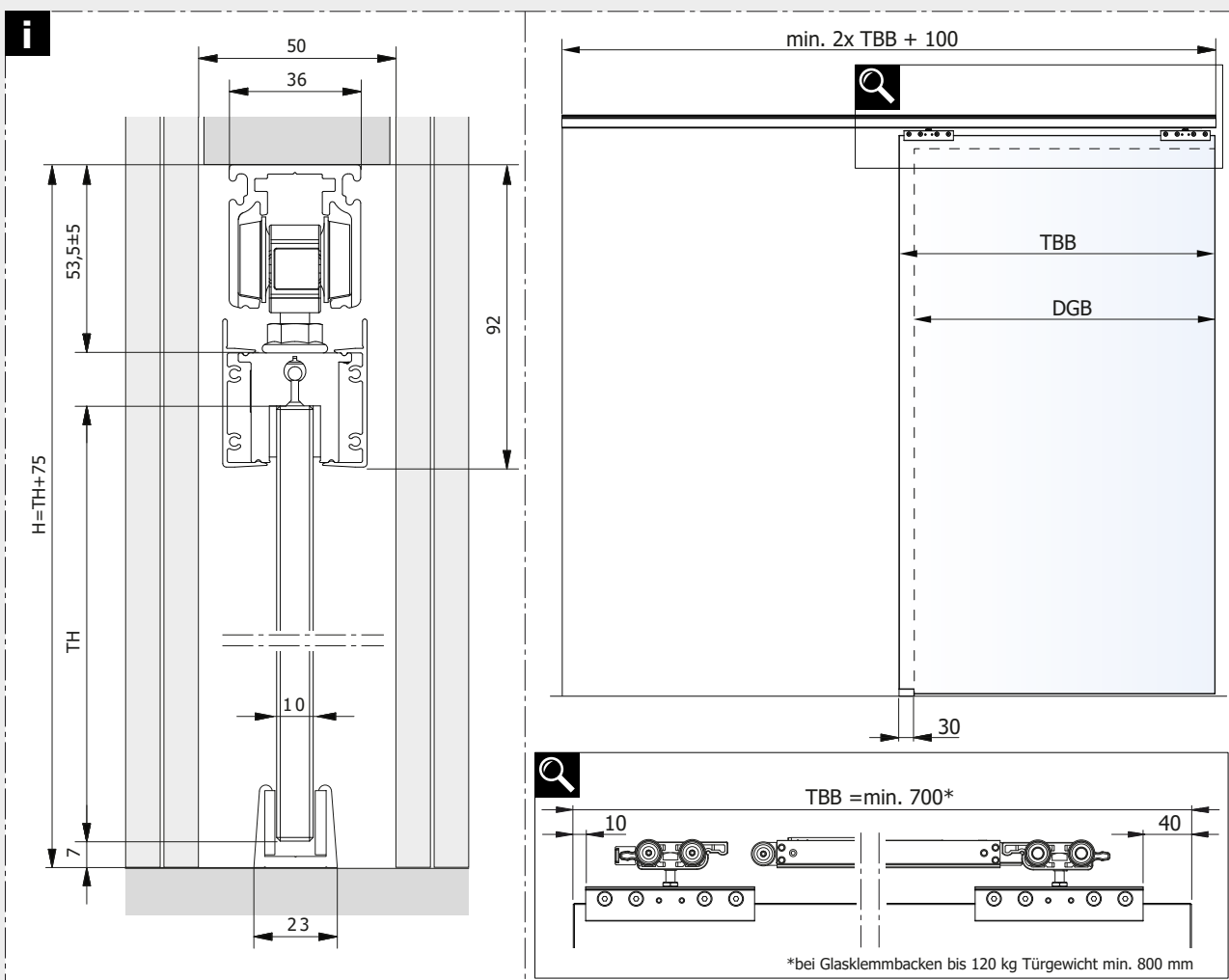


Montageanleitung

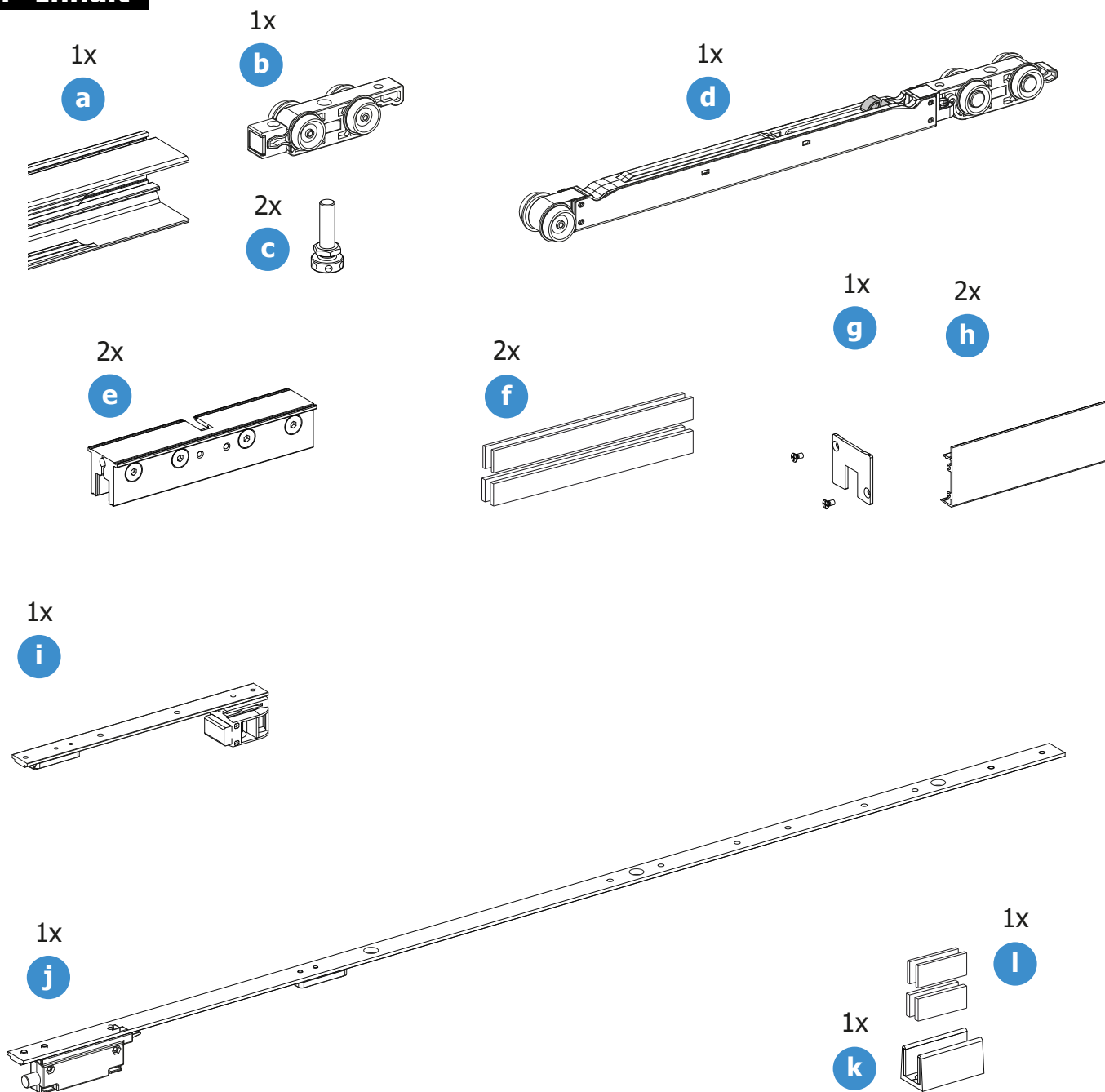


IWT Schiebetürbeschlag
für Glastüren bis 80 kg

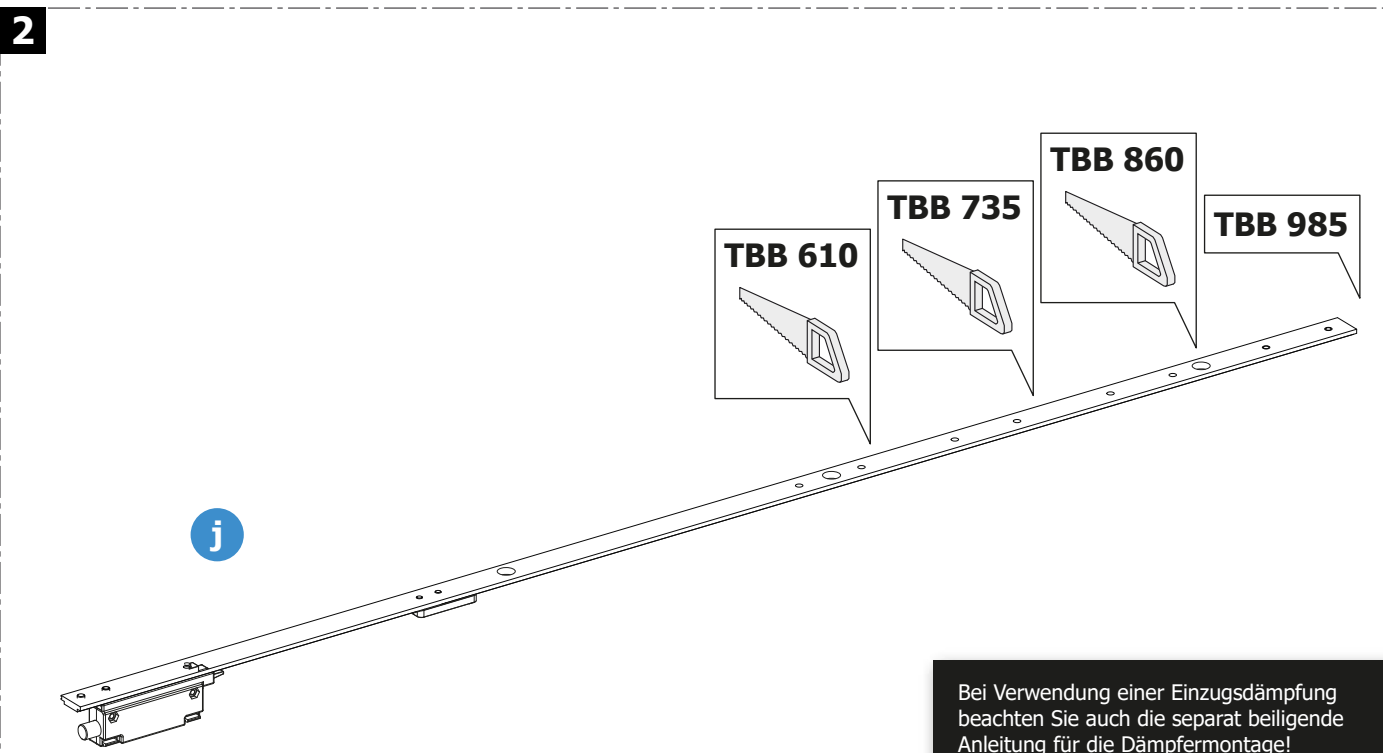
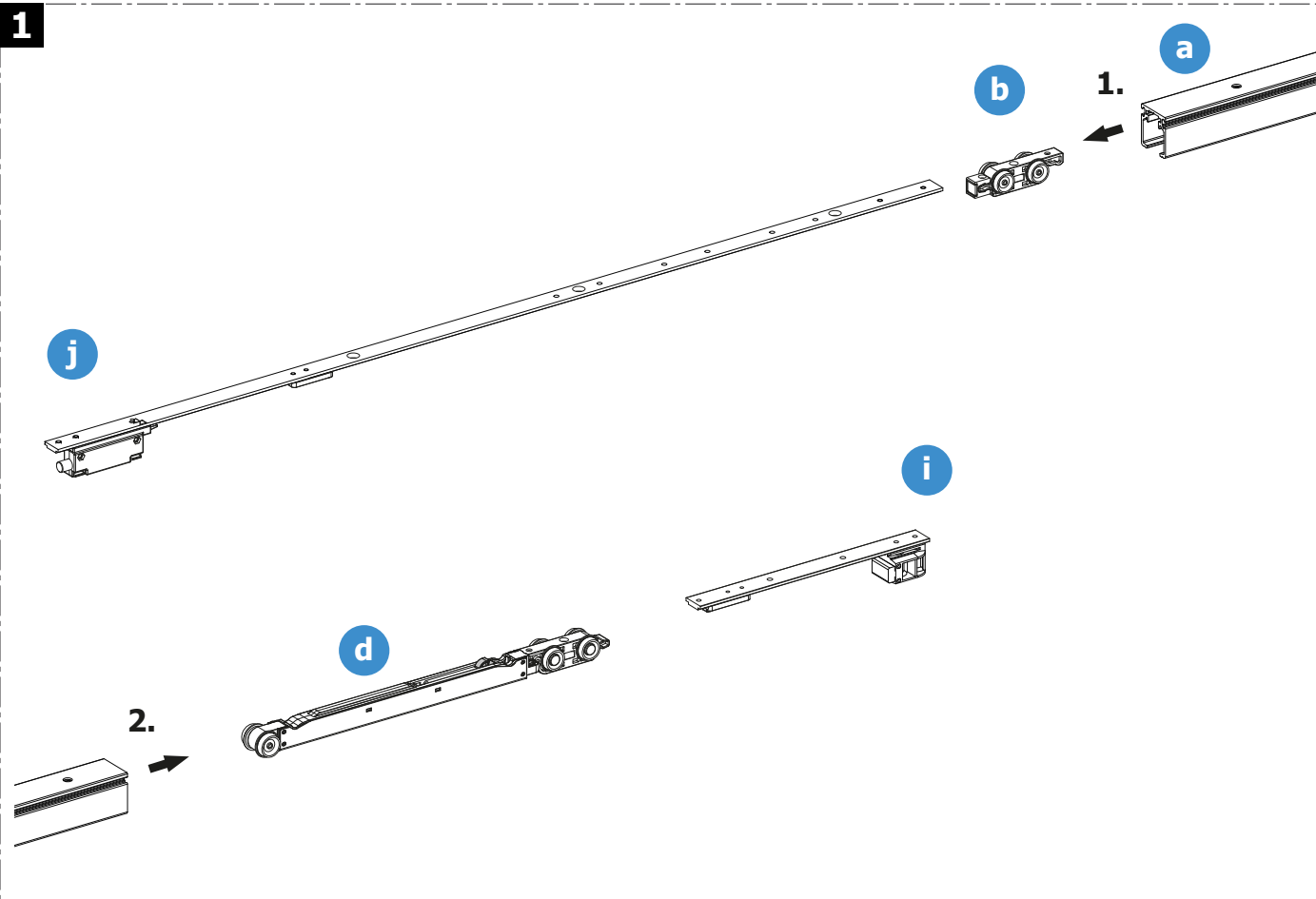


Montageanleitung

i Inhalt

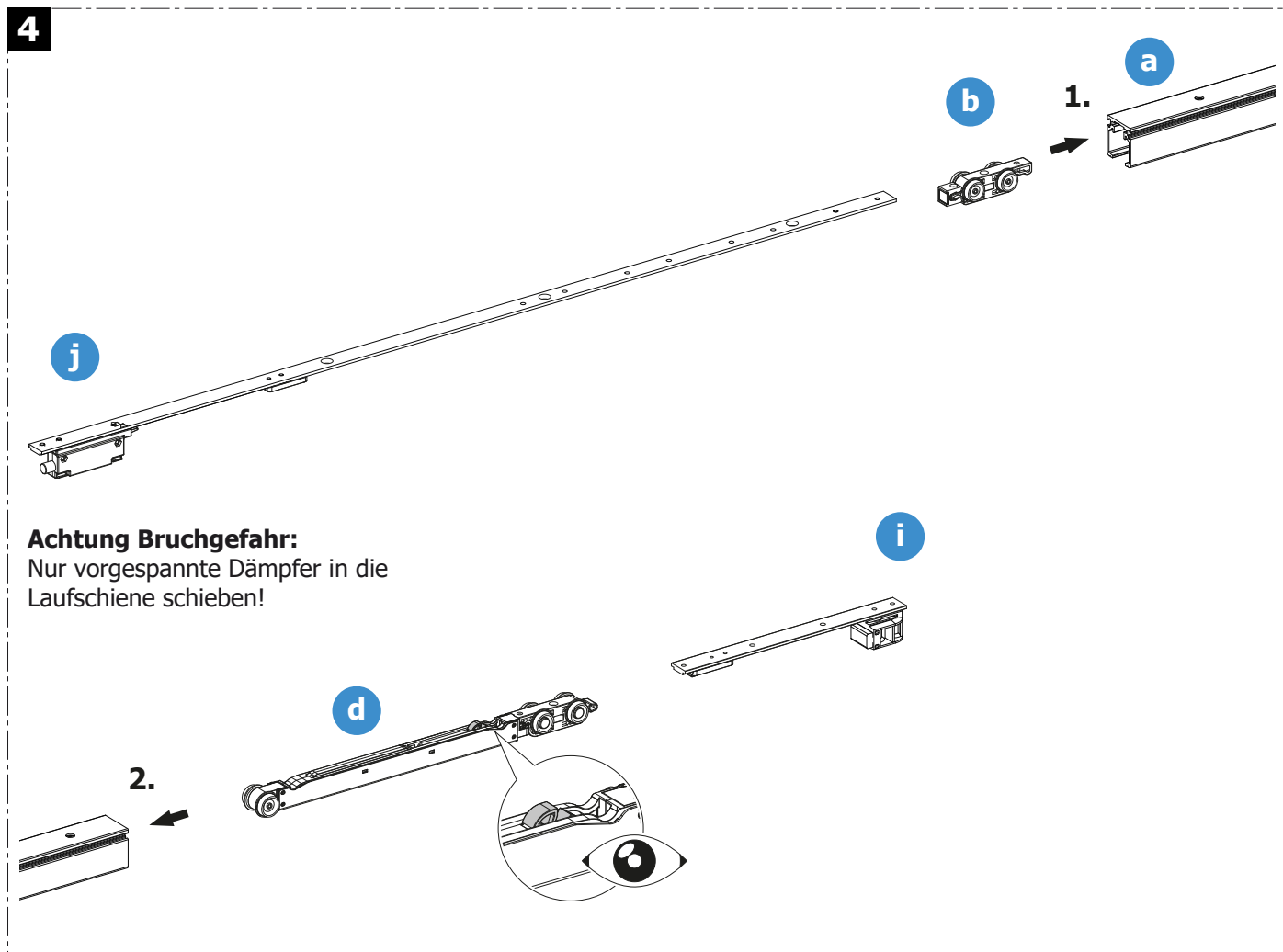
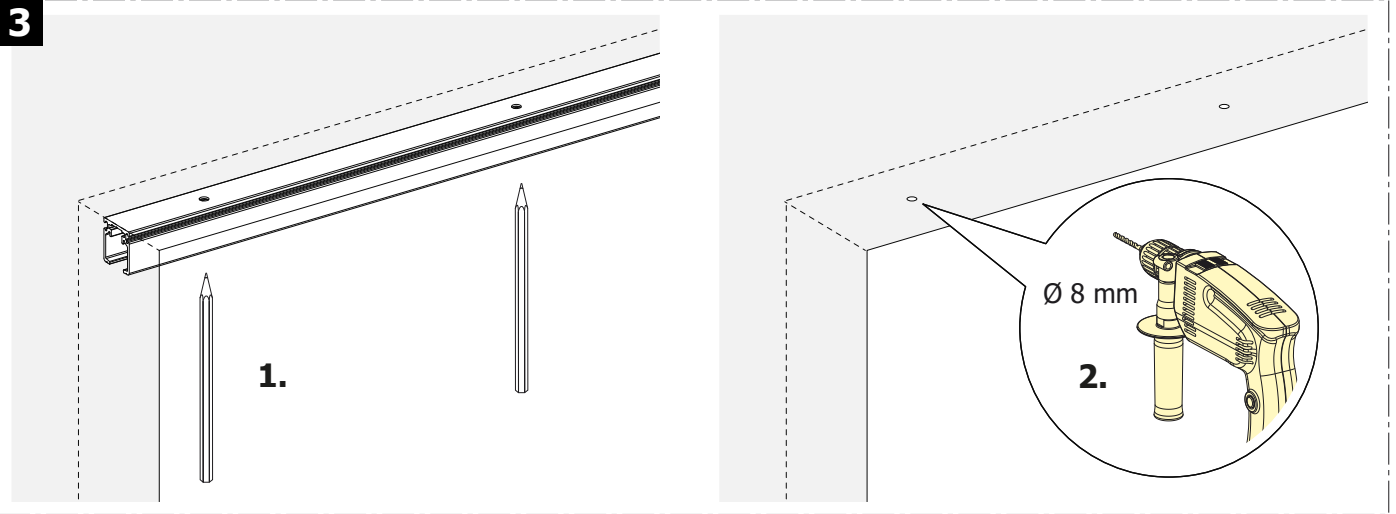


Montageanleitung



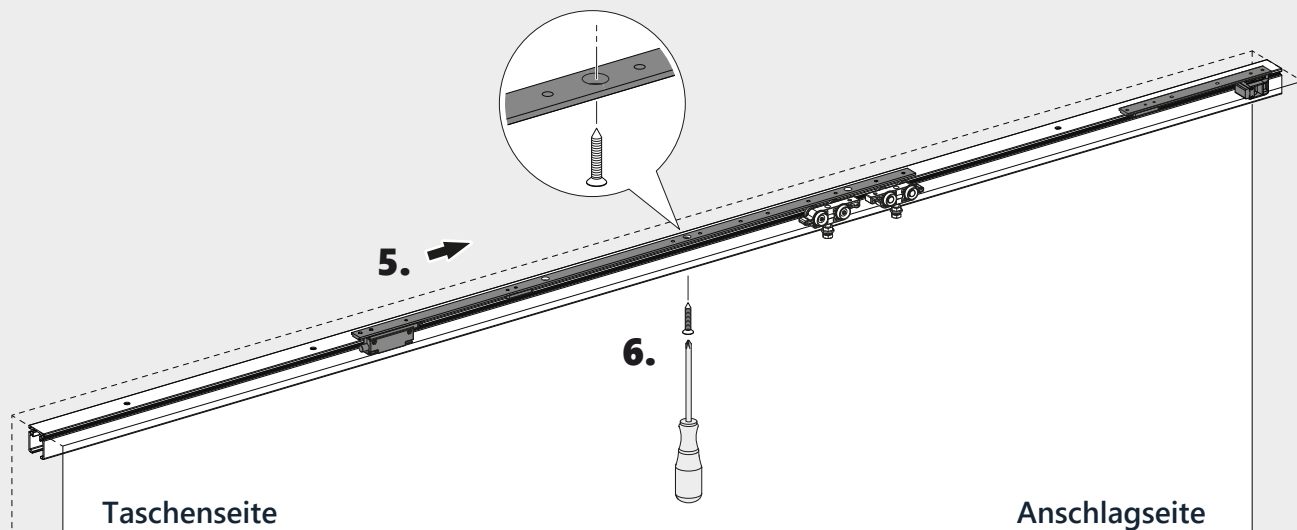
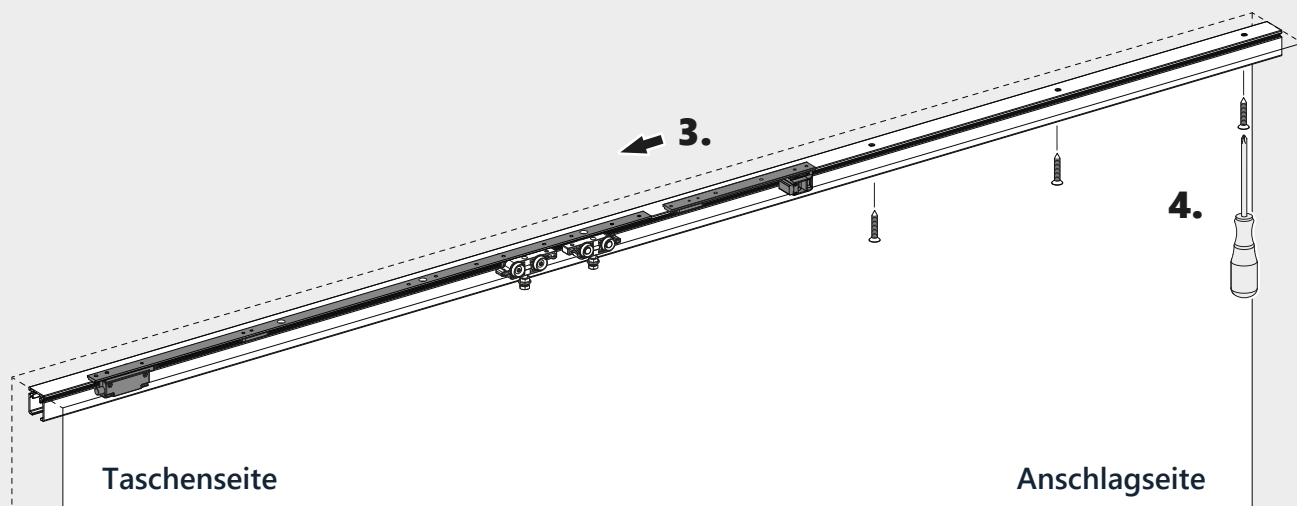
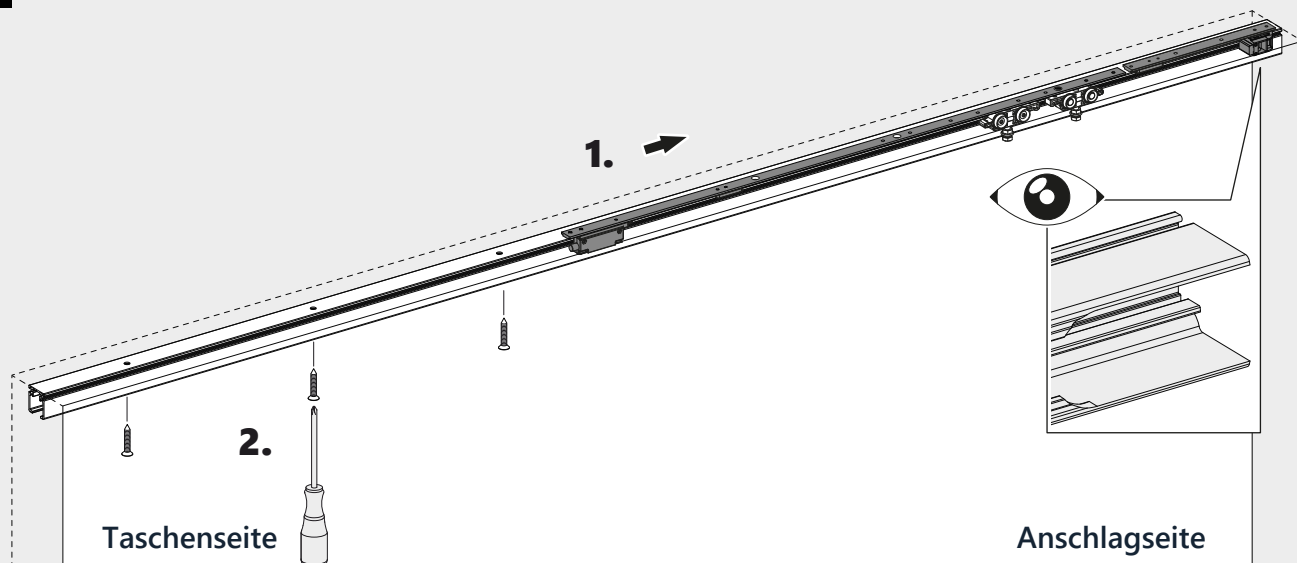
Bei Verwendung einer Einzugsdämpfung beachten Sie auch die separat beiliegende Anleitung für die Dämpfermontage!

Montageanleitung

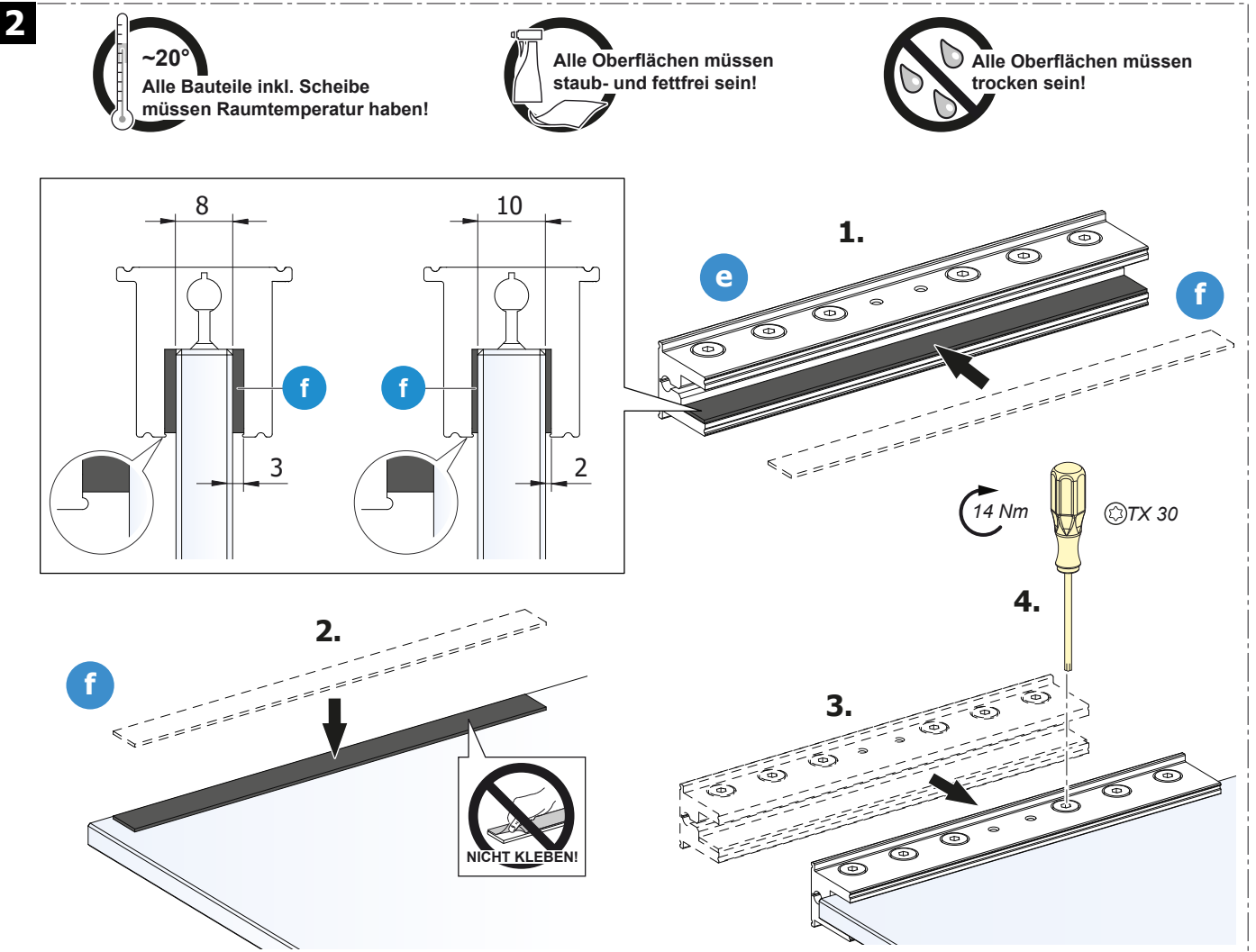
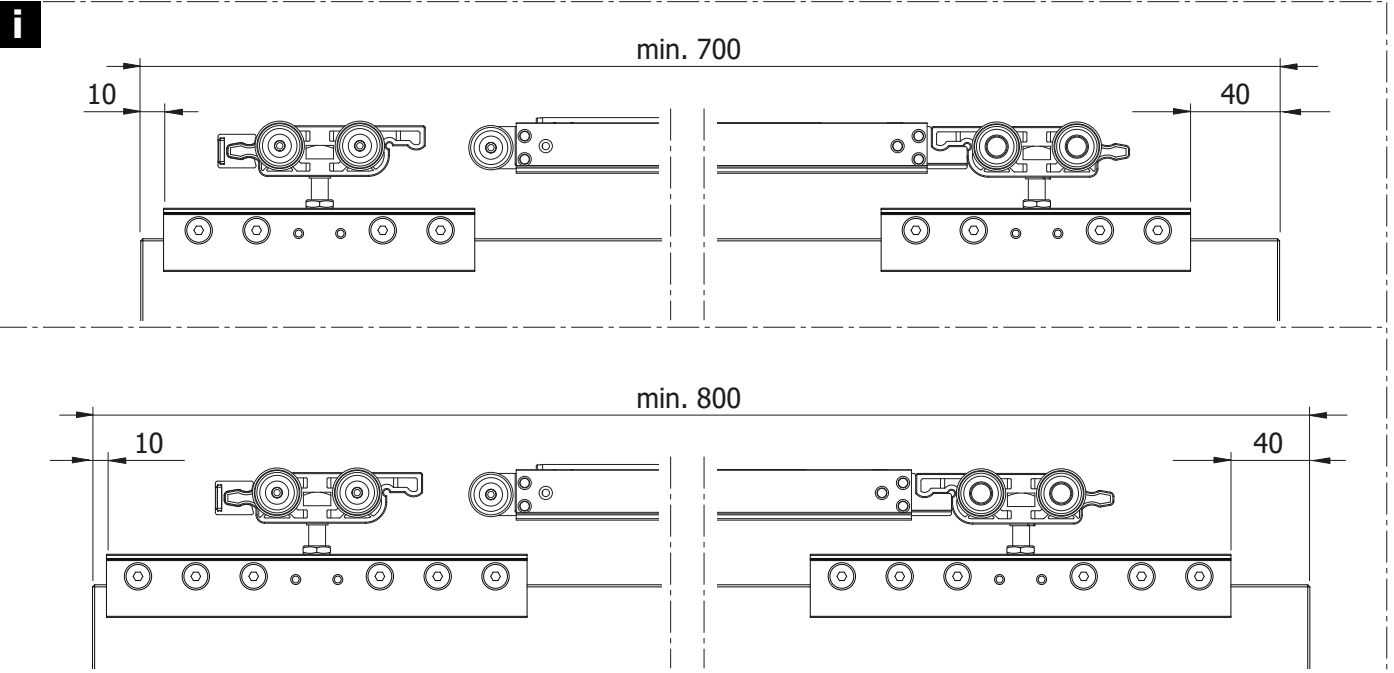


Montageanleitung

5

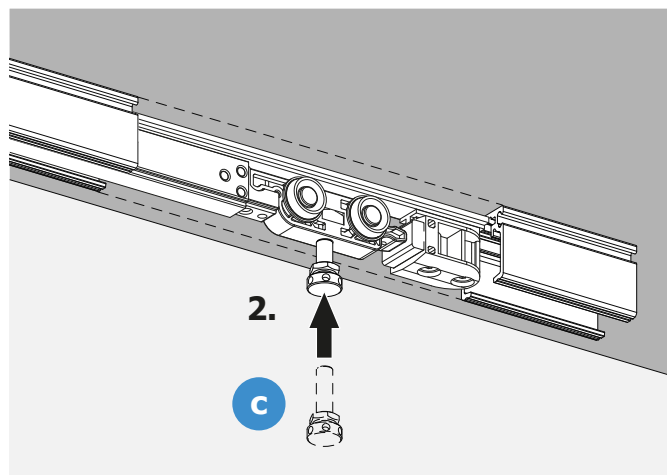
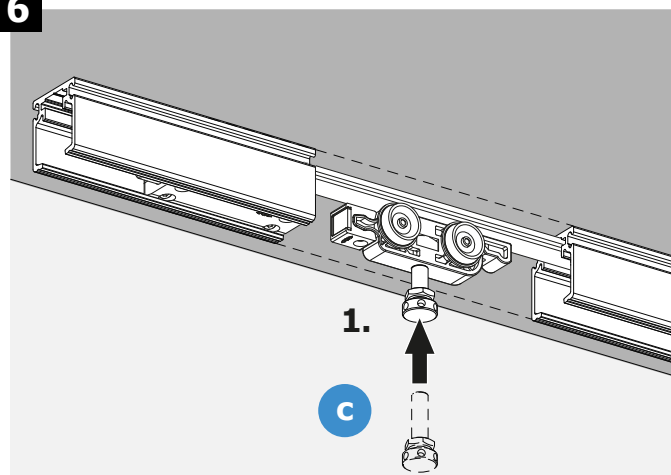


Montageanleitung

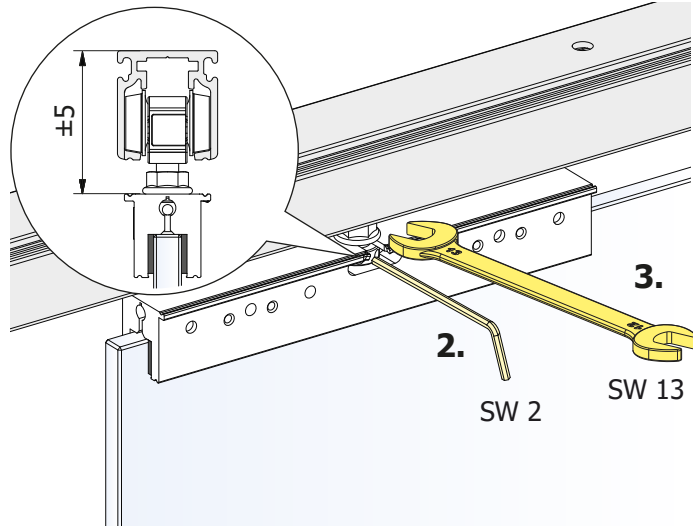
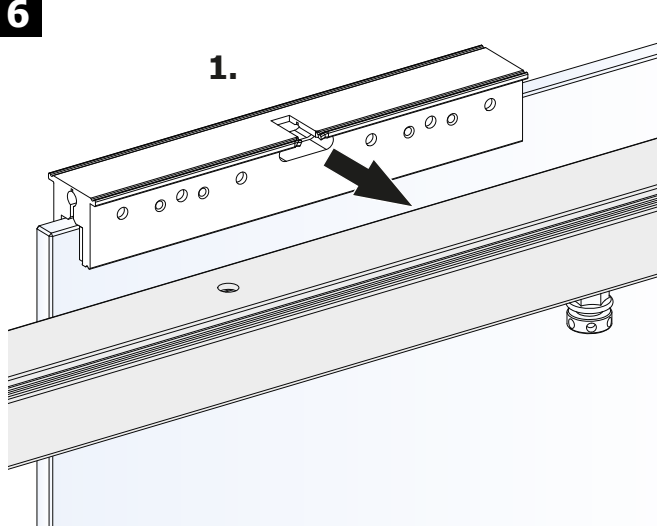


Montageanleitung

6

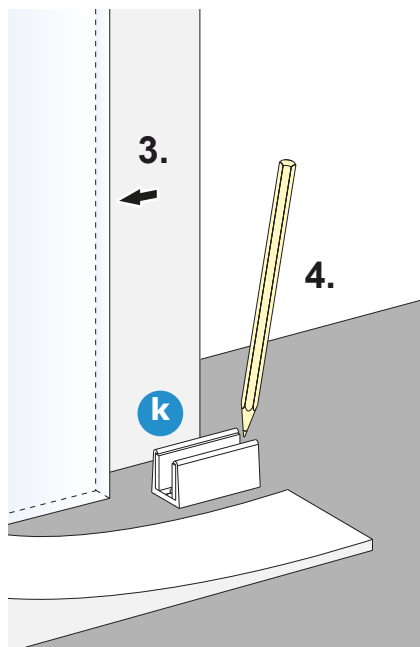
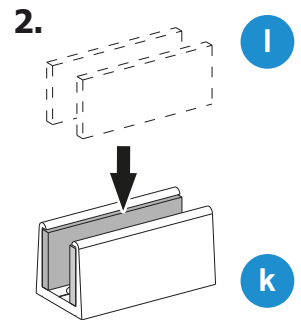
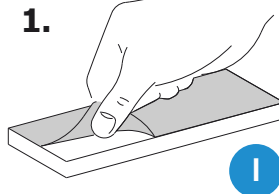
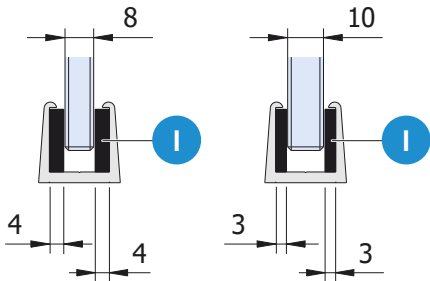


6

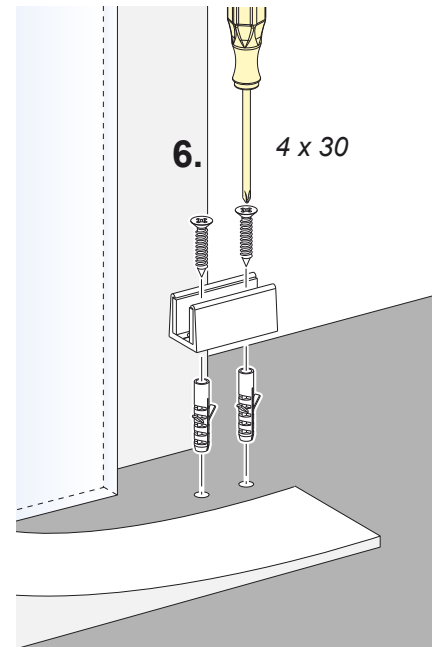
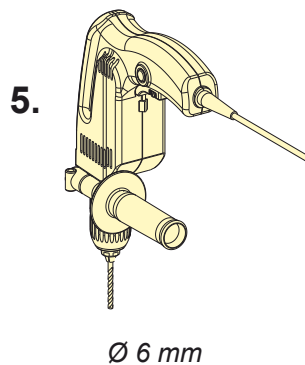


Montageanleitung

10



ACHTUNG:
Das Befestigungsmaterial ist bauseits zu stellen und muss an die örtlichen Gegebenheiten angepasst werden!



8

